

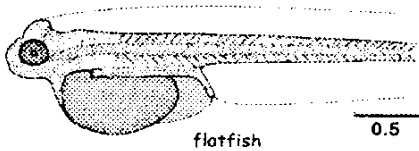
# Phylum Chordata

Subphylum Vertebrata

Class Osteichthyes

(BONY FISH)

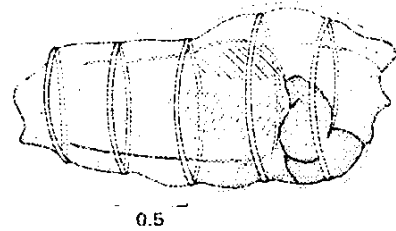
## LARVAL FORMS



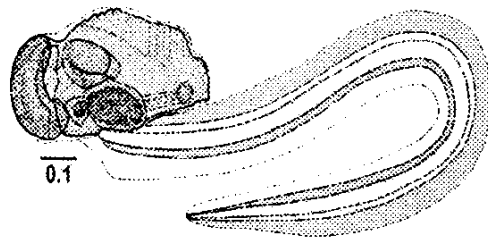
# Phylum Chordata

Subphylum Urochordata

Class Thaliacea (SALPS)



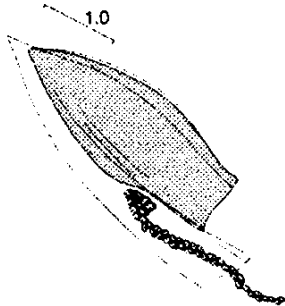
Class Appendicularia (APPENDICULARIANS)



# Phylum Cnidaria

Class Hydrozoa

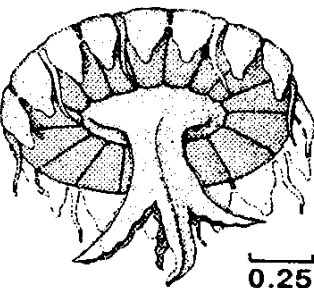
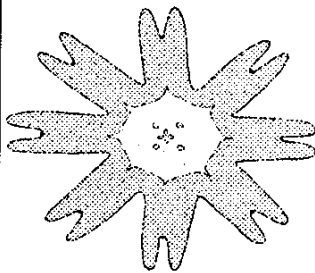
siphonophores



Class Scyphozoa

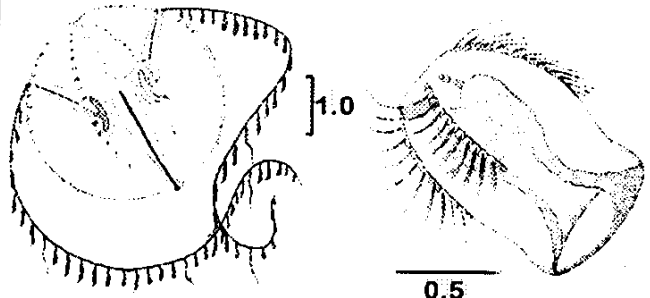
ephyra of moon jelly

juvenile moon jelly



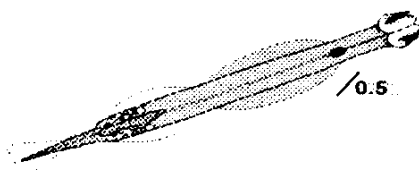
# Phylum Ctenophora

(CTENOPHORES)



# Phylum Chaetognatha

(ARROW WORMS)



scale: 1 mm