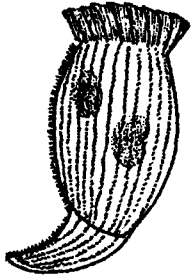
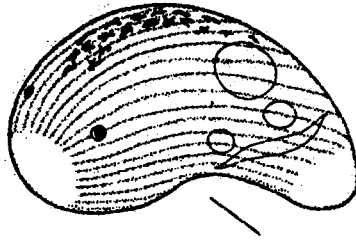


MARINE CILIATES

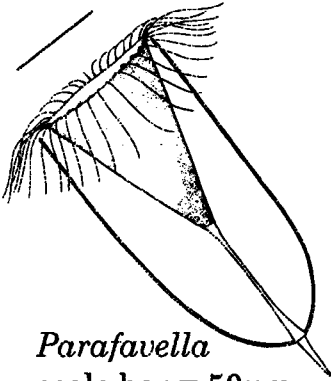
Phylum Ciliophora



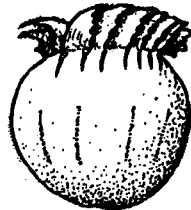
Strombidinopsis
scale bar = 50µm



Chlamydodon
scale bar = 25µm



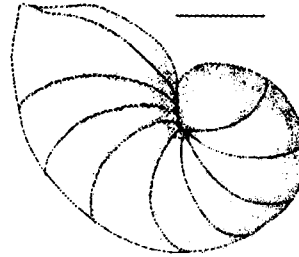
Parafavella
scale bar = 50µm



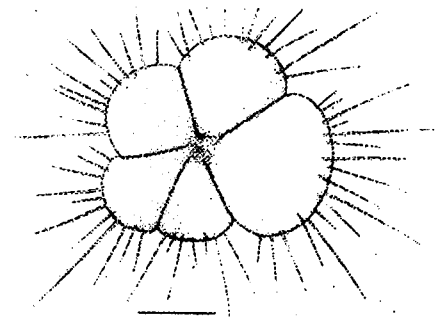
Strobilidium
scale bar = 10µm

FORAMINIFERANS

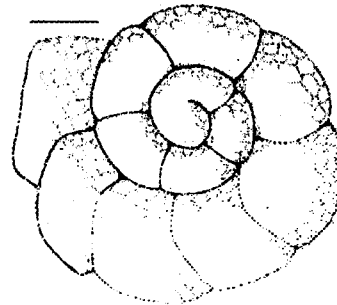
(marine ameboid protozoa)



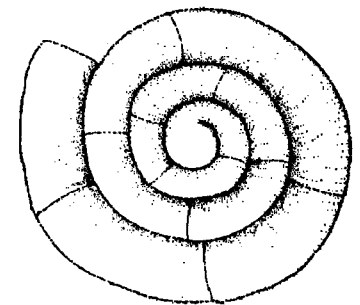
Family Nonionidae
scale bar = 25



Family Globorotaliidae
scale bar = 25



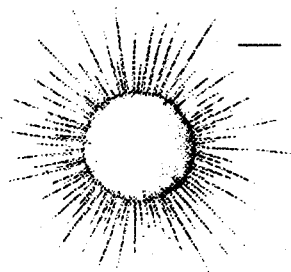
Family Discorbidae
scale bar = 25µm



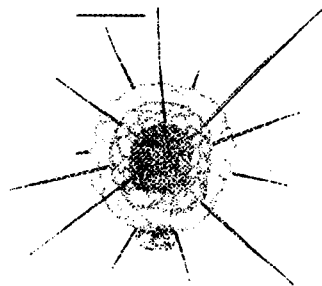
Family Epistomariidae
scale bar = 25

RADIOLARIANS

(marine ameboid protozoa)



scale bar = 25µm



scale bar = 25µm